

· SMT and THT
assembly

· Design of electronic
devices

· Software
development

· Design of digital
circuits

OUR SERVICES INCLUDE:

Automatic SMT and THT assembly

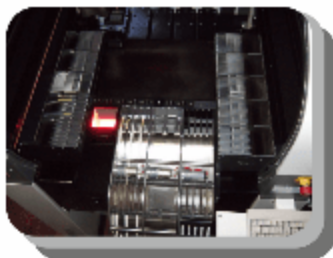
The orders we deliver for our customers in Poland and abroad are of different nature – ranging from single prototype PCBs to mass production. Our offer is addressed primarily to manufacturers of:

- lighting equipment,
- industrial automation,
- electronic equipment for industrial audio-video equipment/household appliances, automotive or medical.

We offer competitive prices and high quality service. With a modern assembly line equipped with a high-end system of laser centering and high definition vision system we are able to deliver projects requiring high precision combining elements of very small dimensions (e.g. 0603, 0402, 0201 or even 01005), or a very small pitch (from 0.3 mm).

To address our Customers' expectations we also provide THT assembly services, using both wave soldering as well as devices for manual soldering in the framework of supplementary mounting.

We execute orders using elements entrusted to us by the customer or provided by us at wholesale prices.



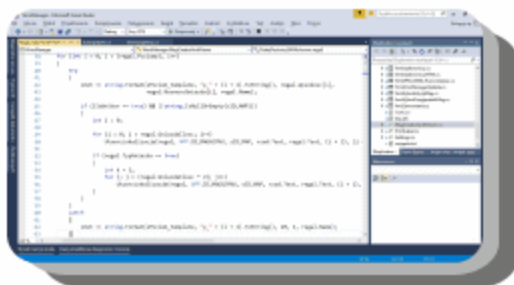
Software development

We provide programming services, creating the software from the scratch and developing it strictly according to our Customer's instructions. Mainly, we develop:

- embedded systems for most popular microcontrollers (also specialized, e.g. DSP), from simple solutions to advanced, based on real-time systems (e.g. FreeRTOS or Linux Embedded);

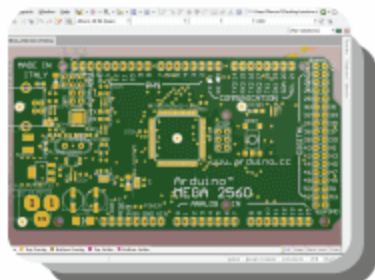
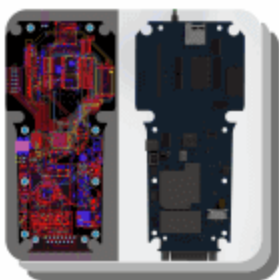
Software development

- applications for Microsoft Windows® systems (WinAPI and .NET technologies);
- mobile applications (Android).



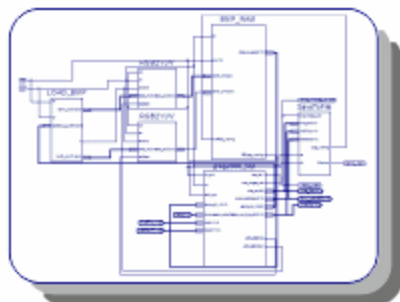
Design of electronic devices

We design templates for SMT glue or solder paste. We also develop schematic diagrams of PCB projects and create necessary technical documentation and technology. We tailor our projects to the capacities of our production line.



Design of digital circuits (HDL)

We develop dedicated digital circuits in hardware description language (HDL) for CPLD/FPGA structures. We deliver projects ranging from system modelling to testbench development and necessary system performance simulation to conclude in implementation on a structure specified by the Customer. We also develop necessary technical documentation drafted by our system.





ASSEMTEC EUROPE SP. Z O.O.

**ST. KOŻUCHOWSKA 20C
65-364 ZIELONA GÓRA**

**office@assemteceurope.com
<https://assemteceurope.com>**

**Registration No. (KRS): 0000789188
VAT No. (NIP): PL 929-20-03-167
REGON: 383519343**

